

REV.  
B

AS1731

FEDERAL SUPPLY CLASS  
4730

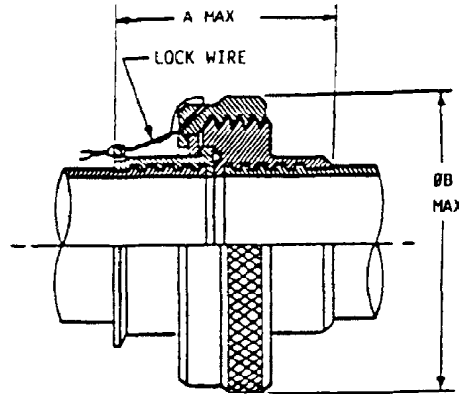


FIGURE 1 - TYPE I COUPLING - ASSEMBLED VIEW

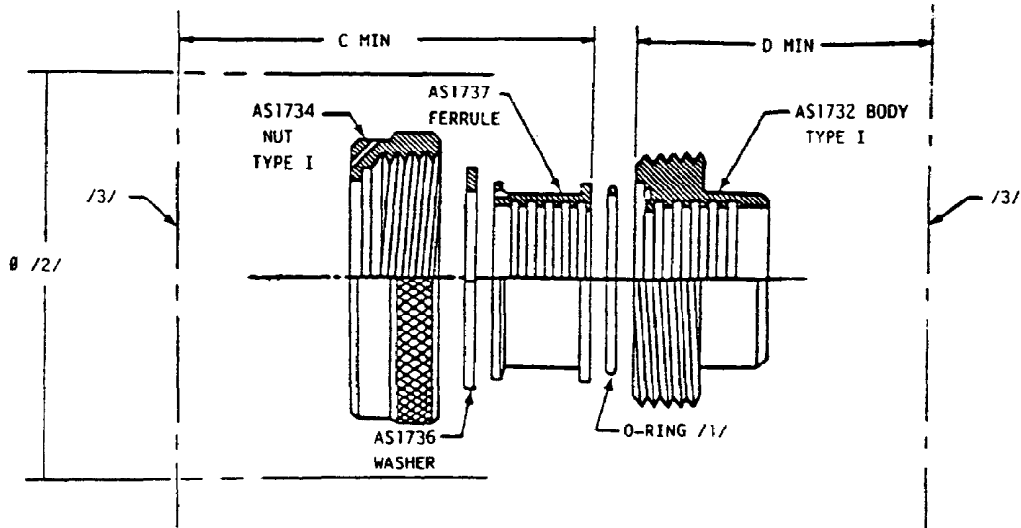
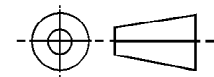


FIGURE 2 - TYPE I COUPLING - EXPLODED VIEW

THIRD ANGLE PROJECTION



ISSUED 1982-09 REVISED 1993-09 REAFFIRMED 2001-12

CUSTODIAN: SAE G-3/G-3A

**SAE** The Engineering Society  
For Advancing Mobility  
Land Sea Air and Space  
**INTERNATIONAL**  
400 Commonwealth Drive, Warrendale, PA 15096-0001

**AEROSPACE STANDARD**

COUPLING, RIGID, FIXED CAVITY, THREADED  
FERRULE TYPE TUBE ENDS, ENVELOPE DIMENSIONS  
DESIGN STANDARD

**AS1731**  
SHEET 1 OF 4

**REV.  
B**

Copyright 2002 Society of Automotive Engineers, Inc.  
All rights reserved.

Printed in the U.S.A.

TO PLACE A DOCUMENT ORDER: (724) 776-4970

FAX: (724) 776-0790

SAE WEB ADDRESS: <http://www.sae.org>

SAE Technical Standards Board Rules provide that: "This report is published by SAE to advance the state of technical and engineering sciences. The use of this report is entirely voluntary, and its applicability and suitability for any particular use, including any patent infringement arising therefrom, is the sole responsibility of the user."

SAE reviews each technical report at least every five years at which time it may be reaffirmed, revised, or cancelled. SAE invites your written comments and suggestions.

REV.  
B

AS1731

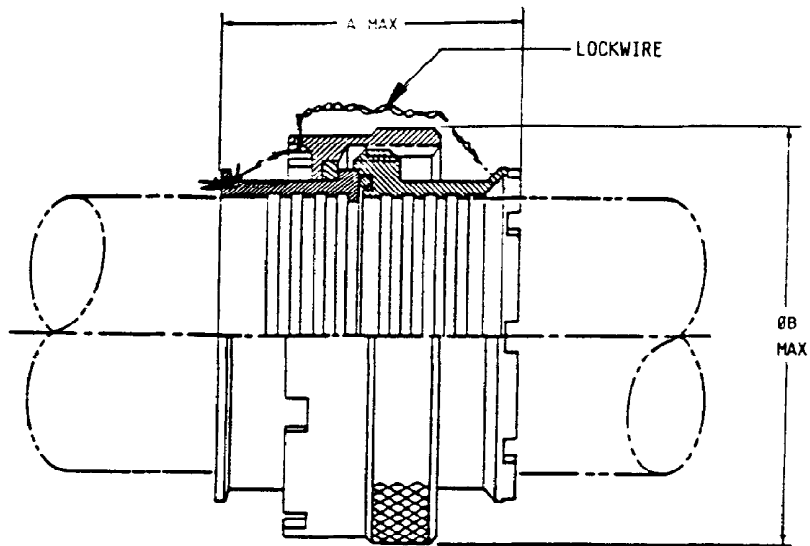


FIGURE 3 - TYPE II COUPLING - ASSEMBLED VIEW

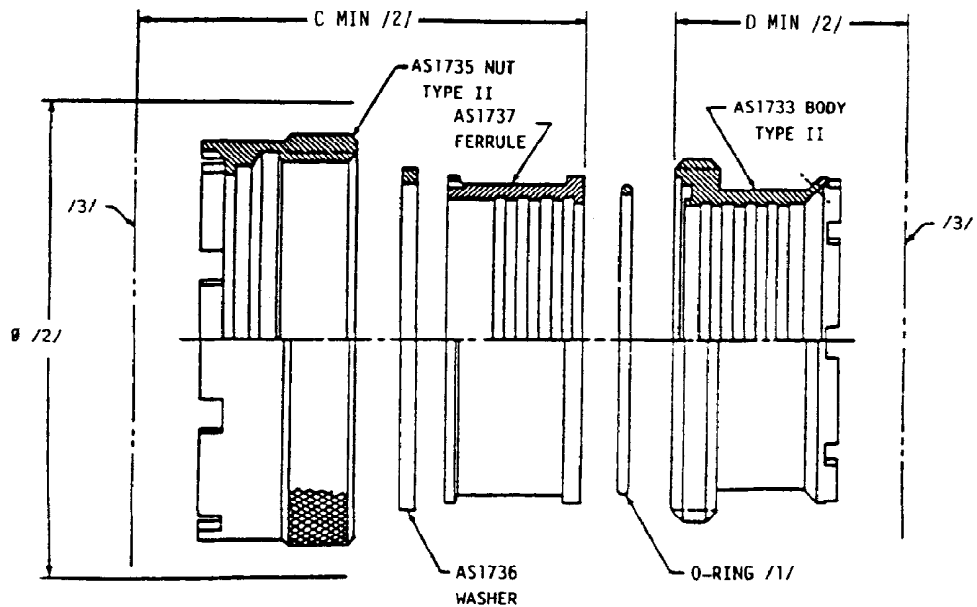


FIGURE 4 - TYPE II COUPLING - EXPLODED VIEW

**SAE** The Engineering Society  
For Advancing Mobility  
Land Sea Air and Space  
**INTERNATIONAL**  
400 Commonwealth Drive, Warrendale, PA 15096-0001

**AEROSPACE STANDARD**

COUPLING, RIGID, FIXED CAVITY, THREADED  
FERRULE TYPE TUBE ENDS, ENVELOPE DIMENSIONS  
DESIGN STANDARD

**AS1731**  
SHEET 2 OF 4

**REV.**  
**B**